

CANNABIS DIALOGUE

Community Workshop

DE NOVO PLANNING GROUP



Meeting Purpose

The Colusa County Board of Supervisors seeks public input regarding the potential development and implementation of County regulations related to the commercial production, processing, manufacturing and testing of cannabis (marijuana) products.

*Commercial cannabis includes both medical and recreational cannabis.



How will tonight's input be used?

- A total of 7 workshops will be held throughout the County.
 - each will cover the same topics and seek the same input
 - An online survey, asking similar questions, is available on the County website. www.countyofcolusa.org
- Following the workshops, a summary report will be prepared and presented to the Board of Supervisors.
- The Board will consider the public input as they decide how to proceed (or not) with the development of local cannabis regulations.

Meeting Overview

PURPOSE

- Again, the purpose of the meeting is to obtain input for the Board to consider in evaluating the County's current cannabis regulations for possible changes.
- To receive that input, during the second half of tonight's meeting we are going to get together in groups to discuss potential ordinance changes and ask each of you to fill out a comment sheet which identifies any issues, concerns, and opportunities that you believe that the Board should ultimately consider.

Meeting Overview

- In addition, we are also going to ask that after tonight's meeting that you fill out a simple survey if you have not already done so.
- County staff has placed information on the entry table that explains how you can complete the survey on-line or you can take a hard copy and fill it out before you leave or mail it back on the supplied self-addressed envelop.

Meeting Overview

- Before we ask for your input, we are going to begin tonight's meeting with:
- A Summary of applicable laws and regulations
- An Overview of commercial cannabis industry
- And Provide an opportunity to ask any questions that you may have



Who is De Novo Planning Group?

- We are a professional planning firm, based out of the Sacramento area.
- We have been retained by the County to facilitate these workshops.
- We are neutral facilitators of this conversation.
- De Novo's local experience includes preparation of the County's General Plan (2012) and preparation of the County Zoning Code (2014)



What is Cannabis?

- Species name for the entire plant
- The products made from the flowers of the plant (otherwise known as marijuana, weed, pot, bud, hash, etc.)
- Industry shift from term “marijuana” to “cannabis” (they are interchangeable)
- Other terms:
 - Cannabinoid: chemical compound secreted by flowers
 - THC: that’s the psychoactive one
 - Cannabidiol (CBD): medical benefits and generally not psychoactive



Today's Legal Reality – State Law

- 1996: Prop. 215 – Provided protection against prosecution for medical marijuana in California for qualified patients, with a doctor's prescription.
- 2016: Prop. 64 (Adult Use of Marijuana Act) – Legalized recreational marijuana in California.
 - Adults (21+) may possess, process, transport, obtain, or give away no more than one ounce of marijuana
 - OK to cultivate no more than six plants indoors
 - Cities and counties may completely prohibit outdoor cultivation
 - Cities and counties may completely prohibit commercial cannabis activity
 - No public consumption
 - Employers may prohibit marijuana use by employees

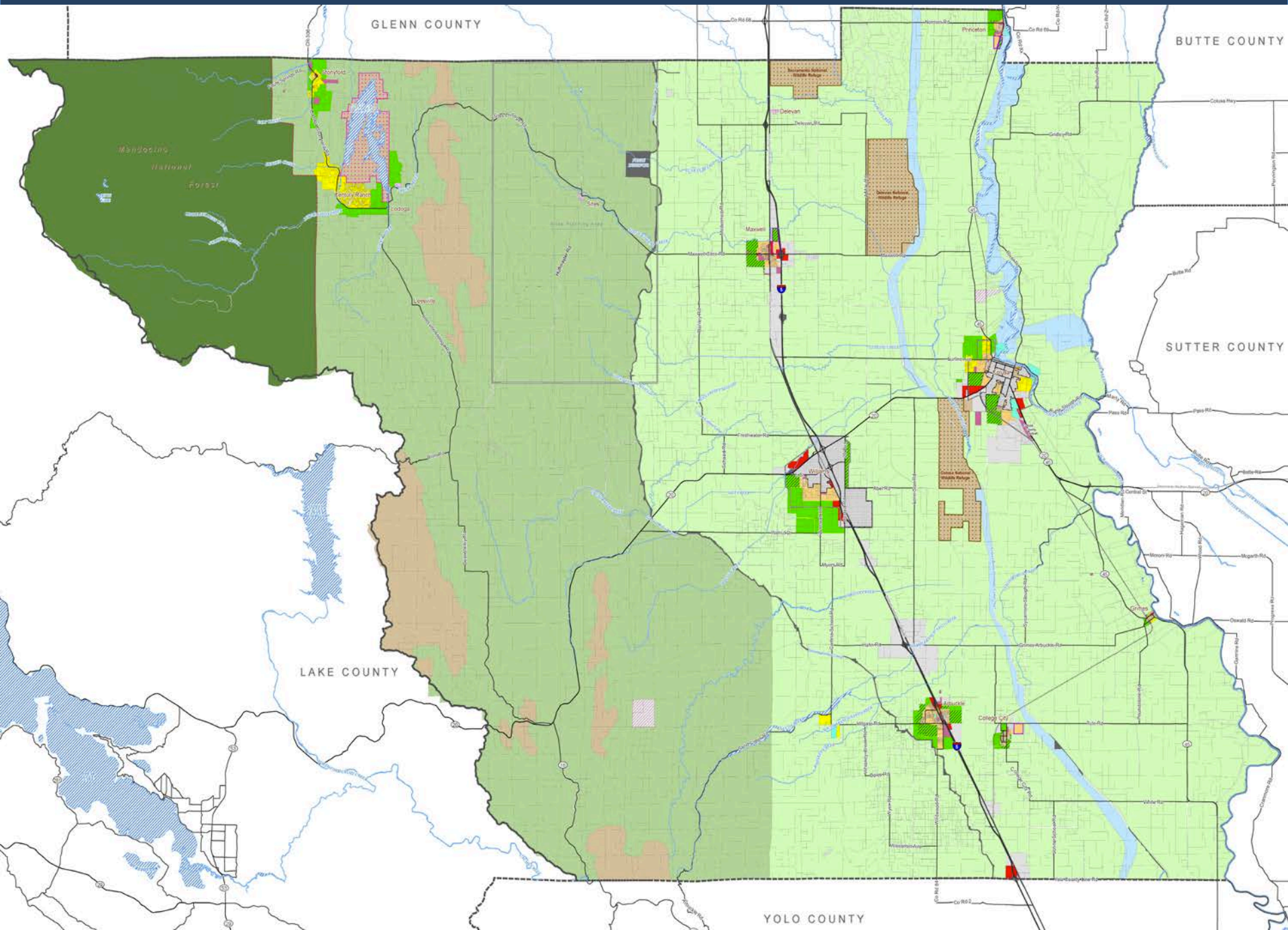


Today's Legal Reality – Colusa County

The County's existing cannabis ordinance currently prohibits all cannabis cultivation, production, and processing within the unincorporated areas of the County, except for the personal cultivation of no more than six plants in a County-permitted accessory structure. The personal cultivation allowance is State mandated.

- As such, the possession, planting, cultivation, harvesting, drying, or processing outdoors on the grounds of a private residence or any other property is currently prohibited in all Zone Districts of the unincorporated territory of Colusa County.
- The establishment or operation of a business engaged in recreational or medical marijuana activity is currently prohibited in all Zone Districts of the unincorporated territory of Colusa County.





GLENN COUNTY

BUTTE COUNTY

SUTTER COUNTY

LAKE COUNTY

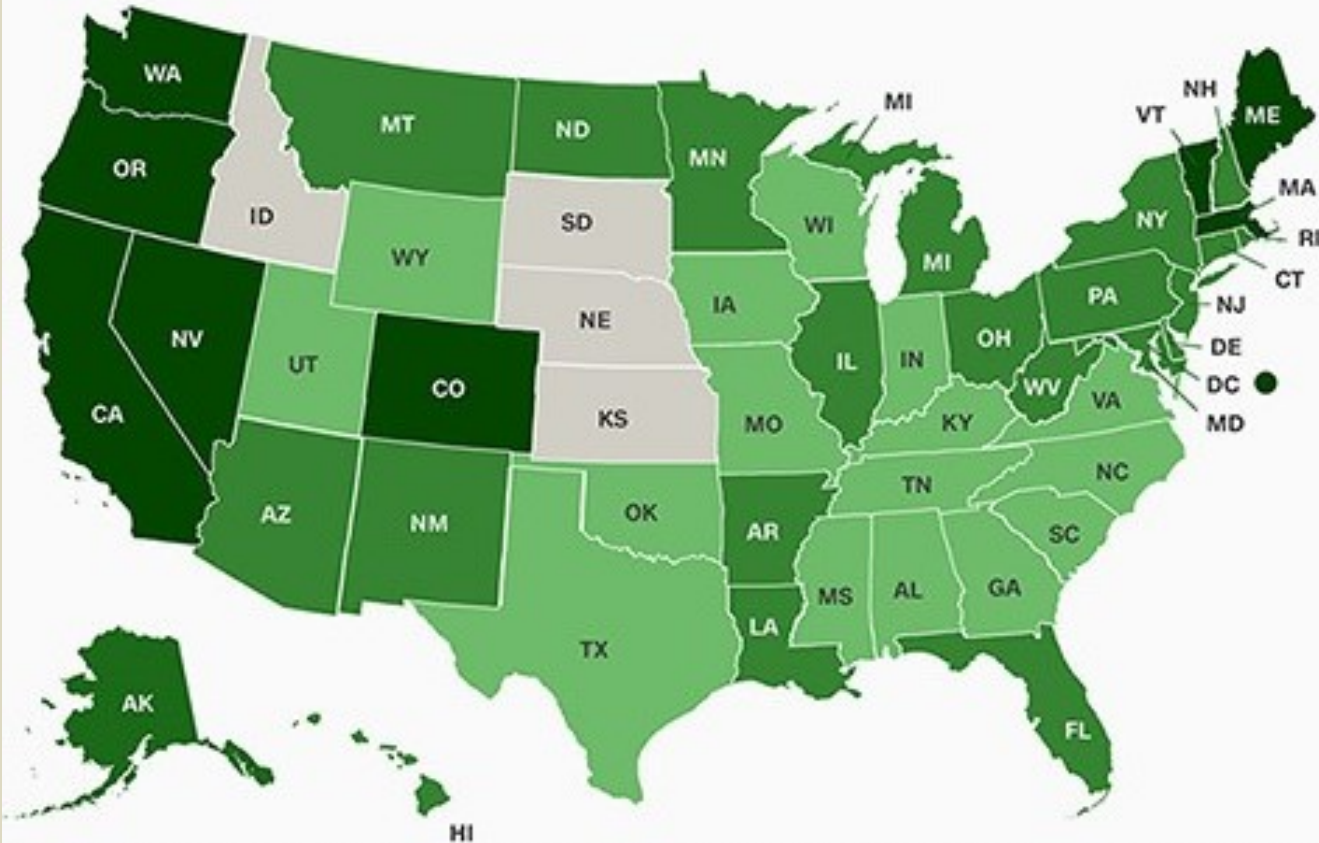
YOLO COUNTY

Today's Legal Reality – Federal Law

Federally, it's still illegal



Cannabis Legalization Status



30

Medical

9

Recreational*

16

CBD

4

None



What can (and can't) Colusa County Regulate?

The County Can:

- Regulate or ban outright:
 - Retail dispensaries
 - Delivery services originating or terminating in the unincorporated county
 - Outdoor cultivation
 - Indoor commercial cultivation
 - Manufacturing
 - Testing
 - Any other state-licensed cannabis business
- Establish local taxation and regulatory licensing fees



What can (and can't) Colusa County Regulate?

The County **Can Not**:

- Ban personal indoor use and indoor cultivation (6 plants or fewer)
- Ban possession of up to 28.5 grams non-concentrated marijuana or 8 grams concentrated marijuana products

NOTE:

The current County Code requires that personal cultivation:

- Take place in an accessory structure that;
 - Is permitted and inspected through the Building Department.
 - Is constructed of solid opaque materials.
- Can not take place in a greenhouse; and
- Must not take place in a residence.

See Sections 11-3 and 11-6 of the County Code for specific details.



Commercial Industry Overview

- Cultivation
- Processing and Manufacturing
- Testing
- Distribution
- Retail sales
 - The County, at this point, is not considering retail sales or outdoor cultivation regulations. (i.e. retail sales and outdoor cultivation to remain prohibited).

Cultivation

- Indoor Cultivation:

- Grow room or greenhouse
- Soil and fertilizer
- Water
- Overhead lighting
- Exhaust fan(s)
- Monitoring equipment



- Outdoor Cultivation:

- Land
- Soil
- Water
- Fertilizers
- Pesticides



Manufacturing and Processing

- Drying after harvest
- Hashish
 - Requires heat and pressure
- Essential Oil (for vaporizing or edibles)
 - Requires a solvent (either butane, carbon dioxide, or oxygen)
- Other products
 - Similar to cooking/baking



Manufacturing Requirements

- State-level licensing
- Written manufacturing operation procedures
- Hazard analysis
- Master manufacturing protocol
- Waste management requirements
- THC (psycho-activity) limitations per product
- Prohibited Products (alcohol, dairy, seafood, etc.)



Testing

- Laboratory work
- Tests for the presence or absence of various analytes, including cannabinoids, residual solvents, micro-organisms, pesticides, heavy metals, and mycotoxins; water activity and moisture content; and filth and foreign material.
- Labs must be be accredited by the International Organization for Standardization



License Types

The State must issue a license for the commercial cultivation, distribution, manufacturing, or testing of cannabis:

Cultivation:

- Specialty - Up to 5,000 square feet
- Small - Up to 10,000 square feet
- Medium - Up to 22,000 square feet (1 acre for outdoor)
- Large - Over 22,000 square feet (over 1 acre for outdoor)

Manufacturing:

- Non-Volatile
- Volatile

Distribution

Testing



Revenue Opportunities

- Permitting/Inspection Fees (Personal or Commercial)
- Conditional Use Permit Fees (Commercial)
- Development Agreements
- Prop 218 Tax Measures
- Grant funding from state (only available if retail is permitted)
- Increase in property tax revenue
- Possible increase in sales tax revenue



What are Other Counties and Cities Doing?

	Indoor Cultivation	Outdoor Cultivation	Manufacturing	Retail
Sutter County	Allowed	Banned	Banned	Banned
Yolo County	Allowed	Allowed	Banned	Banned
Sacramento Co.	Allowed	Banned	Banned	Banned
Lake County	Allowed	Allowed	Banned	Allowed
Yuba County	Banned	Banned	Banned	Banned
Glenn County	Banned	Banned	Banned	Banned
Butte County	Allowed	Allowed	Banned	Banned
City of Colusa	Allowed	Banned	Allowed	Banned
City of Williams	Allowed	Banned	Allowed	Banned

Note: Copies of the City of Colusa and Williams cannabis ordinances are available on the County website, on the Community Development Dept. page. (Quick link on the right-hand side of page)



Group Discussion

- 1. Identify top concerns, if any, with commercial cannabis cultivation, manufacturing, testing, and distribution in Colusa County.**
 - **Do you have different concerns for indoor vs. outdoor cultivation? Please explain.**
 - **Do you have different concerns for manufacturing/processing vs. cultivation? Please explain.**
- 2. Identify top benefits, if any, associated with allowing cannabis cultivation and manufacturing in Colusa County.**

Next Steps

- Following the final public workshop in late March, a summary report will be presented to the Board of Supervisors (likely in April)
- The Board will determine whether or not to proceed with drafting cannabis regulations.
- IF the Board elects to proceed, the process will be open to the public, with ample opportunity to provide input on the details and specifics.

Wrap Up

- Take the survey!
 - Either online or mail in hard copy
 - www.countyofcolusa.org
- Stay informed
 - Periodically check the County website for updates on this effort
- Thank you for being involved!