



COUNTY OF COLUSA
COMMUNITY DEVELOPMENT DEPARTMENT, WATER RESOURCES DIVISION
100 Sunrise Boulevard Suite A, Colusa, CA 95932 | 530-458-0719

April 30, 2020

RE: Notice of Public Comment Period for an out-of-county groundwater substitution water transfer

To Whom It May Concern;

The Colusa County Groundwater Commission hereby notifies you that the Sycamore Mutual Water Company in Colusa County has requested a permit to transfer a maximum of 5,000 acre feet of water through a groundwater substitution water transfer to San Luis and Delta- Mendota Water Authority, outside of the county. Groundwater substitution transfers occur when sellers choose to pump groundwater in lieu of diverting surface water supplies, thereby making the surface water available for transfer.

A 30-day public comment period for this proposed out-of-county groundwater substitution water transfer begins on May 1, 2020 and will close at 5:00 pm on May 30, 2020. Following the close of the public comment period, the Colusa County Groundwater Commission will hold a public hearing on this matter where you would also have the opportunity to provide any comments.

The transfer permit request letter is attached and the environmental documentation can be found online at the links below:

EIS/EIR: https://www.usbr.gov/mp/nepa/includes/documentShow.php?Doc_ID=40932

Mitigation Plan: https://www.usbr.gov/mp/nepa/includes/documentShow.php?Doc_ID=40952

All documents: https://www.usbr.gov/mp/nepa/nepa_project_details.php?Project_ID=18361

All written comments are due by 5:00 pm on May 30, 2020. Comments should be sent to:

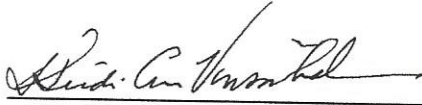
Email: mfahey@countyofcolusa.com

Mail: Colusa County Groundwater Commission
C/O: Mary Fahey, Colusa County Water Resources Manager
100 Sunrise Blvd., Suite A
Colusa, CA 95932

We appreciate your review and consideration of this proposal.

Sycamore Mutual Water Company

Daniel W. Griffith, Manager




Heidi Vinsonhaler, President

Jake Kalfsbeek, Director

Frank Rogers, Director

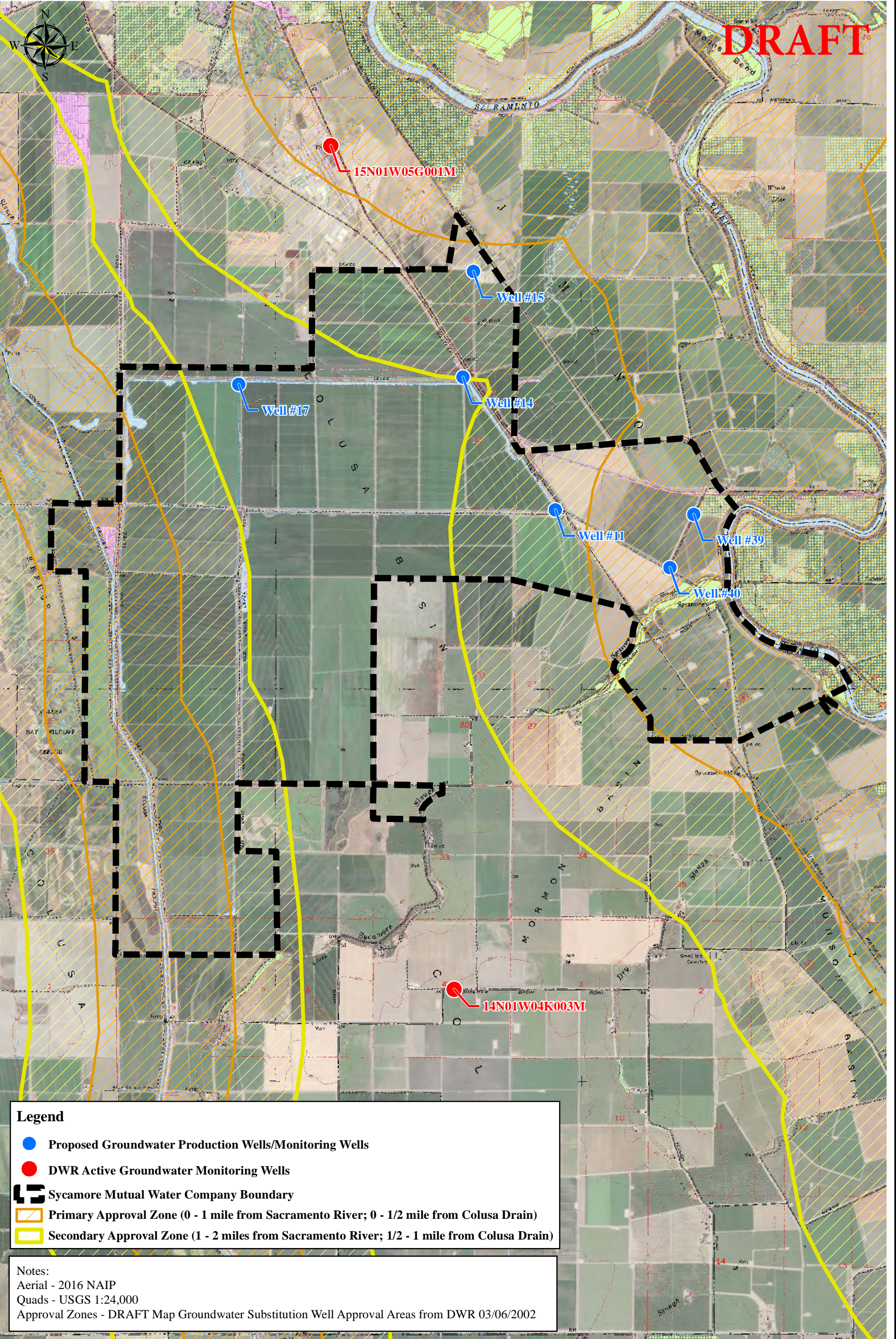
Don Traynham, Member

Walt Seaver, Member



Mark Kirsten, Member

DRAFT



Legend

- Proposed Groundwater Production Wells/Monitoring Wells
- DWR Active Groundwater Monitoring Wells
- Sycamore Mutual Water Company Boundary
- Primary Approval Zone (0 - 1 mile from Sacramento River; 0 - 1/2 mile from Colusa Drain)
- Secondary Approval Zone (1 - 2 miles from Sacramento River; 1/2 - 1 mile from Colusa Drain)

Notes:
 Aerial - 2016 NAIP
 Quads - USGS 1:24,000
 Approval Zones - DRAFT Map Groundwater Substitution Well Approval Areas from DWR 03/06/2002

MBK ENGINEERS
 455 University Avenue, Suite 100
 Sacramento, CA 95825
 Phone: 916-456-4400 Fax: 916-456-0253
 www.mbkengineers.com

Sycamore Mutual Water Company
2020 Water Transfer

Scale: 1 inch = 3,500 feet
 Client: 2473.14
 Date: April 2020
 Drawn By: MB
 Requested By: DC

0 3,500 Feet

(Scale bar length on original map equals 1 inch)