

COLUSA COUNTY
DEPARTMENT OF AGRICULTURE
2004
CROP REPORT



HARRY A. KRUG
Agricultural Commissioner

COLUSA COUNTY
DEPARTMENT OF AGRICULTURE
HARRY A. KRUG
AGRICULTURAL COMMISSIONER/SEALER OF WEIGHTS AND MEASURES
100 SUNRISE BLVD., SUITE F
COLUSA, CA 95932
530-458-0580

TO: Mr. A. G. Kawamura, Secretary
California Department of Food and Agriculture
and The Honorable Board of Supervisors, Colusa County

In accordance with the provisions of Section 2279, of the California Food and Agricultural Code, I am pleased to submit the 2004 Colusa County Crop Report.

The 2004 crop year total county production value was \$351,604,000, which was a \$9,969,000 reduction from the all time record high of \$361,573,000 in 2003. This was a 2.8 percent reduction in gross value.

The county's largest crop, rice, decreased in value from 2003 with a total 2004 value of \$122,956,000. This was due to a decrease in production value from \$320.00 per ton to \$195.00 per ton in 2004 even though there was an increase in acreage from 127,350 to 150,130. Almonds remained number two in county ranking with a continued increase in overall 2004 value of \$77,555,000 from a 2003 value of \$73,206,000. This was a result of an increase in acreage and unit value even though production was lower. Processing tomatoes remained number three with an increased 2004 value of \$44,251,000 compared to the 2003 value of \$32,318,000. This was a result of an increase in acreage, production and unit value. Cattle and Calves remained fourth with a value of \$12,870,000 in 2004 compared to \$11,628,000 in 2003. Seed crop production continued the increase from a total 2003 dollar value of \$32,161,000 to a 2004 value of \$41,571,000 due to continued acreage increases in cucumber, onion, squash and watermelon seed production.

I must stress that these figures show gross values only, and do not reflect a net return to the producer.

I wish to thank everyone who contributed to this report. I also express appreciation to all of my staff, especially Lee Ann Price and Jon Richter who set up and compiled this report.

Respectfully submitted,

Harry A. Krug

Harry A. Krug
Agricultural Commissioner

COLUSA COUNTY DEPARTMENT OF AGRICULTURE ANNUAL CROP REPORT 2004

2004 COUNTY BOARD OF SUPERVISORS

Mark Marshall, Chairperson

Christy K. Scofield, District 1

William R. Waite, District 4

E. Douglas White, District 2

David G. Womble, District 5

OFFICE PERSONNEL

Harry A. Krug

Agricultural Commissioner

Jon Richter

Deputy Agricultural Commissioner

Mary Anne Azevedo

Agricultural Biologist and Standards Officer III

R. Scott Kittle

Agricultural Biologist and Standards Officer III

Jack de Wit

Agricultural Biologist and Standards Officer III

David Brown

Agricultural Biologist and Standards Officer II

Thomas Moss

Agricultural Biologist and Standards Officer II

Katharine Padgett

Agricultural Biologist and Standards Officer I

Renee McCormick

Fiscal Administrative Officer

Carla Hendy

Administrative Secretary

Julie Stone

Account Clerk II

Lee Ann Price

Office Assistant III

APIARY PRODUCTION AND VALUE 2004 - 2003



	YEAR	PRODUCTION	UNIT	VALUE	
				PER UNIT	TOTAL
HONEY ¹	2004	21,000	Lb.	\$1.15	\$24,000
	2003	6,000	Lb.	1.30	8,000
PACKAGE BEES ²	2004	5,000	Lb.	8.00	40,000
	2003	7,000	Lb.	7.00	49,000
POLLINATION ³	2004	45,500	Colony	49.00	2,230,000
	2003	44,000	Colony	43.50	1,914,000
QUEENS	2004	22,500	Each	9.00	203,000
	2003	35,000	Each	8.00	280,000
TOTAL	2004				\$2,497,000
	2003				2,251,000



¹ Honey produced by 13,400 colonies in 2004 and 12,200 colonies in 2003, owned by resident beekeepers.

² Includes bulk bees and nuclei.

³ Pollination colonies include all required to pollinate crops grown in Colusa County.



FRUIT AND NUT CROPS ACREAGE, PRODUCTION AND VALUE 2004 - 2003

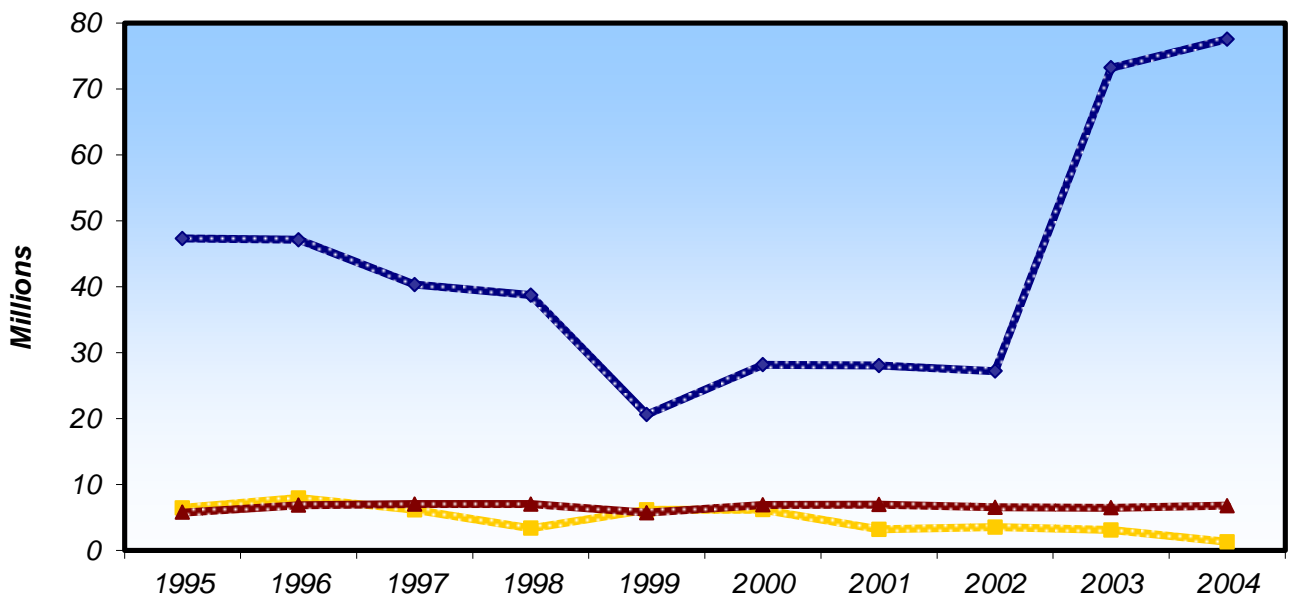
CROP	YEAR	ACREAGE		PRODUCTION		VALUE	
		HARVESTED	PER ACRE	TOTAL	UNIT	PER UNIT	TOTAL
ALMONDS - MEATS	2004	23,360	0.83	19,389	Ton	\$4,000.00	\$77,555,000
	2003	23,240	1.05	24,402	Ton	3,000.00	73,206,000
ALMONDS - HULLS	2004	-----	-----	24,240	Ton	75.00	1,818,000
	2003	-----	-----	30,750	Ton	70.00	2,153,000
PRUNES	2004	2,040	0.55	1,122	Ton	1,160.00	1,302,000
	2003	2,520	1.70	4,284	Ton	720.00	3,084,000
WALNUTS - ENGLISH	2004	4,590	1.42	6,518	Ton	1,040.00	6,779,000
	2003	4,550	1.45	6,598	Ton	980.00	6,466,000
MISCELLANEOUS	2004 ¹	3,645	-----	-----	-----	-----	12,045,000
	2003 ²	3,840	-----	-----	-----	-----	11,166,000
TOTAL	2004	33,635					\$99,499,000
	2003	34,150					96,075,000

¹ Includes organic almonds, apples, apricots, black walnuts, wine grapes, olives, peaches, asian pears, pecans, persimmons and pistachios.

² Includes organic almonds, apples, black walnuts, wine grapes, olives, asian pears, persimmons, fresh prunes and pistachios.



**Fruit & Nut 1995 - 2004
Total Dollar Value**



VEGETABLE CROPS



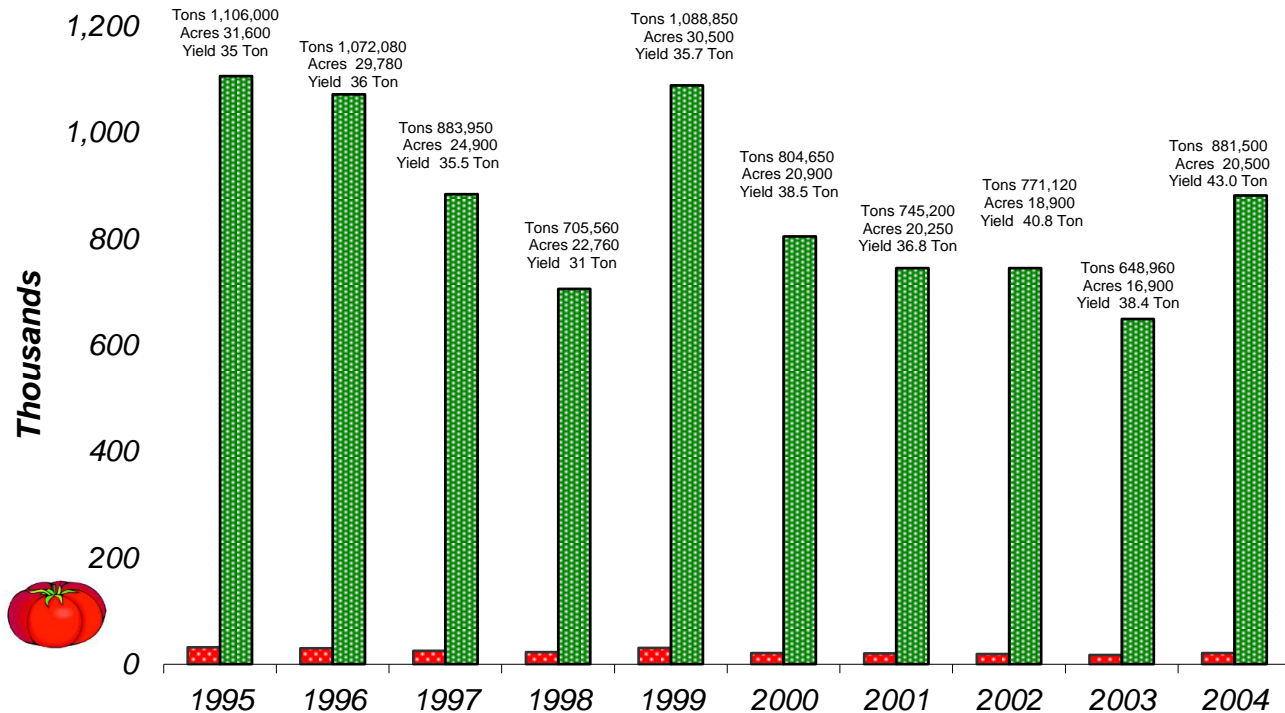
CROPS	ACREAGE		PRODUCTION		VALUE		TOTAL
	YEAR	HARVESTED	PER ACRE	TOTAL	UNIT	PER UNIT	
TOMATOES-PROCESSING	2004	20,500	43.0	881,500	Ton	\$50.20	\$44,251,000
	2003	16,900	38.4	648,960	Ton	49.80	32,318,000
MISCELLANEOUS	2004 ¹	380	-----	-----	-----	-----	1,043,000
	2003 ²	45	-----	-----	-----	-----	68,000
TOTAL	2004	20,880					\$45,294,000
	2003	16,945					32,386,000



¹ Includes honeydew melons, sweet corn, tomatoes and watermelon.

² Includes sweet corn, tomatoes and watermelon.

Tomatoes-Processing 1995 - 2004 Total Acres/Total Production





FIELD CROPS

ACREAGE, PRODUCTION AND VALUE 2004 - 2003

	YEAR	ACREAGE		PRODUCTION		VALUE	
		HARVESTED	PER ACRE	TOTAL	UNIT	PER UNIT	TOTAL
BARLEY	2004	400	1.50	600	Ton	\$95.00	\$57,000
	2003	220	1.40	308	Ton	90.00	28,000
BEANS - DRY	2004	4,370	1.00	4,370	Ton	660.00	2,884,000
	2003	7,050	0.96	6,768	Ton	600.00	4,061,000
CORN - GRAIN	2004	1,410	4.60	6,486	Ton	90.00	584,000
	2003	1,240	4.50	5,580	Ton	85.00	474,000
CORN - WHITE	2004	850	4.70	3,995	Ton	130.00	519,000
	2003	1,550	4.30	6,665	Ton	140.00	933,000
COTTON - LINT	2004	4,820	3.30	15,906	500#	350.00	5,567,000
	2003	4,200	2.70	11,340	500#	360.00	4,082,000
COTTON - SEED	2004	-----	-----	5,560	Ton	156.00	867,000
	2003	-----	-----	3,969	Ton	180.00	714,000
HAY - ALFALFA	2004	5,450	7.00	38,150	Ton	90.00	3,434,000
	2003	5,150	6.90	35,535	Ton	76.00	2,701,000
HAY - ALFALFA CUBE	2004	1,100	7.50	8,250	Ton	120.00	990,000
	2003	1,600	7.50	12,000	Ton	115.00	1,380,000
HAY - GRAIN	2004	3,410	1.50	5,115	Ton	70.00	358,000
	2003 ¹	3,100	1.40	4,340	Ton	55.00	239,000
PASTURE - IRRIGATED	2004	850	-----	-----	Acre	125.00	106,000
	2003	925	-----	-----	Acre	125.00	116,000
PASTURE - DRYLAND	2004	190,000	-----	-----	Acre	7.50	1,425,000
	2003	190,000	-----	-----	Acre	7.50	1,425,000
PASTURE - STUBBLE ²	2004	-----	-----	-----	---	-----	100,000
	2003	-----	-----	-----	---	-----	100,000
RICE ³	2004	150,130	4.20	630,546	Ton	195.00	122,956,000
	2003	127,350	3.95	503,033	Ton	320.00	160,971,000
SAFFLOWER	2004	4,950	1.00	4,950	Ton	220.00	1,089,000
	2003	9,350	0.80	7,480	Ton	270.00	2,020,000
WHEAT	2004	24,200	2.50	60,500	Ton	102.00	6,171,000
	2003	21,500	2.40	51,600	Ton	110.00	5,676,000
MISCELLANEOUS ⁴	2004	-----	-----	-----	---	-----	2,146,000
	2003	-----	-----	-----	---	-----	1,499,000
TOTAL	2004	391,940					\$149,253,000
	2003	373,235					186,419,000

¹ Includes wheat, barley, oat, sudangrass and volunteer grain hay.

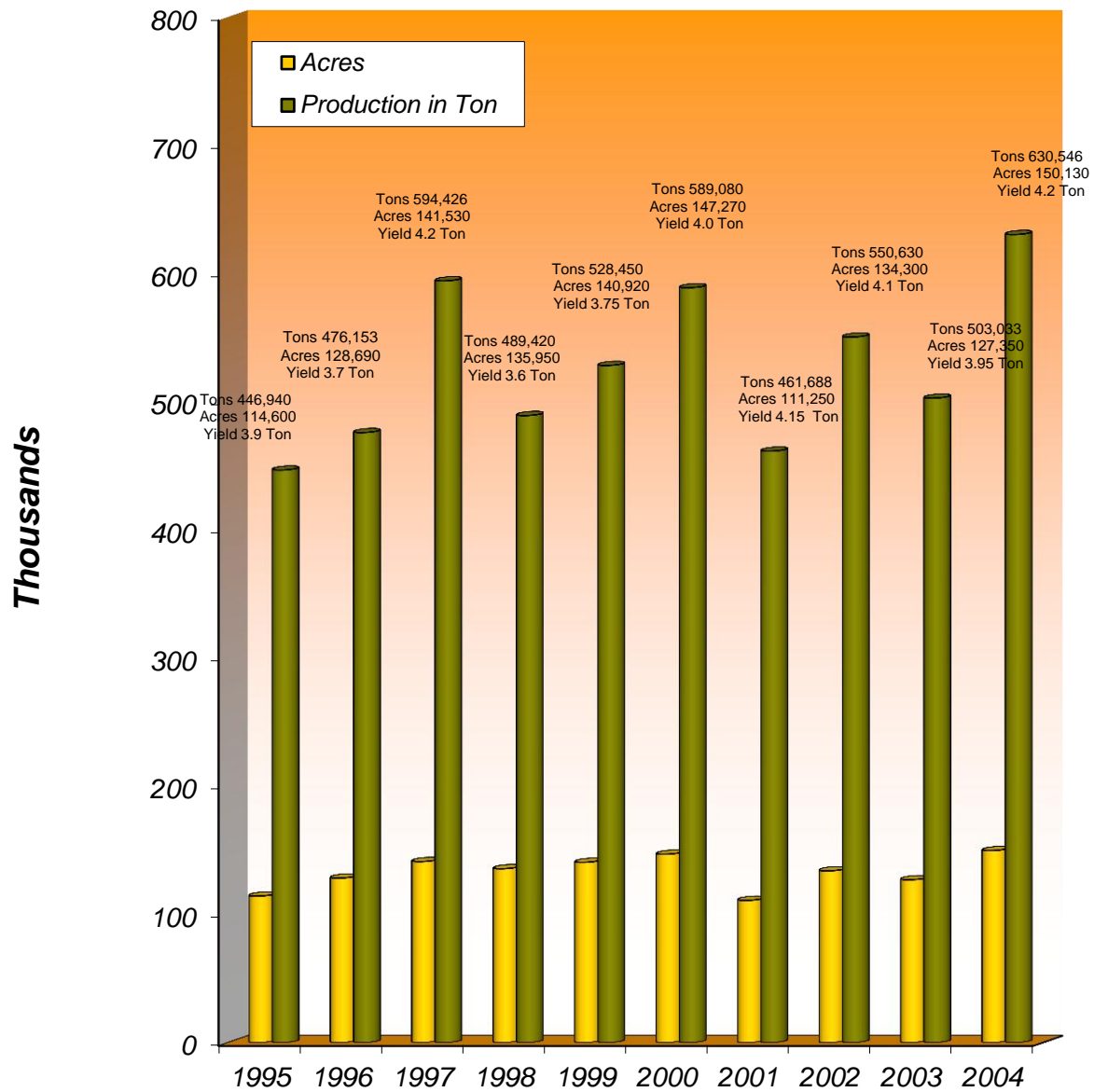
² Includes alfalfa, wheat and barley stubble.

³ Includes all Farm Service Agency payments to growers.

⁴ Includes bean, rice and wheat straw, ornamental gourds, sorghum grain and organic rice.



RICE 1995-2004 Total Acres/Total Production



SEED CROPS

ACREAGE, PRODUCTION AND VALUE 2004 - 2003



CROP	YEAR	ACREAGE		PRODUCTION		VALUE	
		HARVESTED	PER ACRE	TOTAL	UNIT	PER UNIT	TOTAL
BEANS	2004	910	1,930	1,756,300	Lb.	\$0.38	\$667,000
	2003	470	1,950	916,500	Lb.	0.35	321,000
RICE ¹	2004	8,370	8,400	70,308,000	Lb.	0.14	9,843,000
	2003	6,670	7,900	52,693,000	Lb.	0.18	9,485,000
SUNFLOWERS	2004	810	1,210	980,100	Lb.	0.70	686,000
	2003	790	1,150	908,500	Lb.	0.90	818,000
WHEAT	2004	1,100	4,450	4,895,000	Lb.	0.06	294,000
	2003	2,225	4,200	9,345,000	Lb.	0.06	561,000
MISCELLANEOUS ²	2004	2,010	-----	-----	-----	-----	831,000
	2003	1,015	-----	-----	-----	-----	372,000
TOTAL	2004	13,200					\$12,321,000
	2003	11,170					11,557,000



NON-CERTIFIED SEED CROPS

CROP	YEAR	ACREAGE		PRODUCTION		VALUE	
		HARVESTED	PER ACRE	TOTAL	UNIT	PER UNIT	TOTAL
CUCUMBERS	2004	5,250	190	997,500	Lb.	\$7.20	\$7,182,000
	2003	3,440	230	791,200	Lb.	7.60	6,013,000
MELONS	2004	340	360	122,400	Lb.	2.15	263,000
	2003	380	380	144,400	Lb.	2.90	419,000
ONIONS	2004	640	625	400,000	Lb.	16.00	6,400,000
	2003	420	675	283,500	Lb.	16.00	4,536,000
CARROTS	2004	440	350	154,000	Lb.	9.00	1,386,000
	2003	205	170	34,850	Lb.	8.00	279,000
PUMPKINS	2004	235	330	77,550	Lb.	6.10	473,000
	2003	430	270	116,100	Lb.	6.20	720,000
SQUASH	2004	1,880	640	1,203,200	Lb.	5.80	6,979,000
	2003	1,725	520	897,000	Lb.	5.50	4,934,000
WATERMELONS	2004	4,700	320	1,504,000	Lb.	3.80	5,715,000
	2003	2,475	265	655,875	Lb.	3.60	2,361,000
MISCELLANEOUS	2004 ³	770	-----	-----	-----	-----	852,000
	2003 ⁴	1,450	-----	-----	-----	-----	1,342,000
TOTAL	2004	14,255					\$29,250,000
	2003	10,525					20,604,000

¹ Includes all Farm Service Agency payments to growers.

² Asparagus, cotton, safflower, sudangrass and watermelon.

³ Includes beets, broccoli, brussel sprouts, burdock, cabbage, chard, collards, herbs, kale, mustard, parsley, peas, sudangrass, sunflowers, turnips, organic carrots, herbs, flowers and spices.

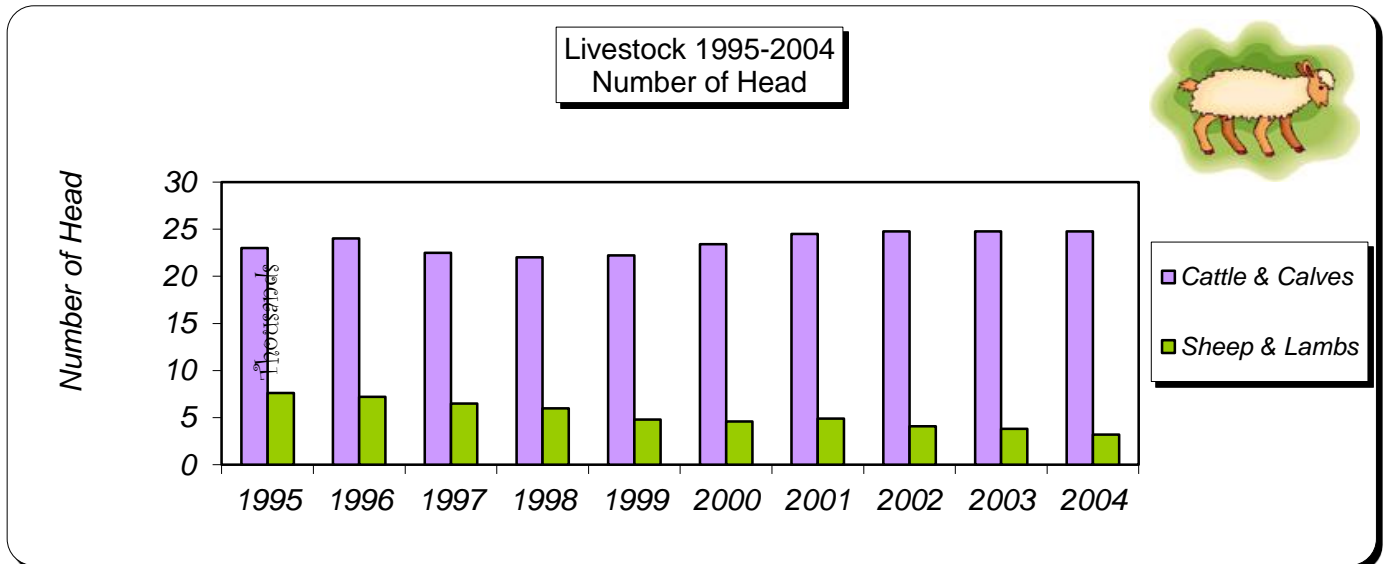
⁴ Includes beets, broccoli, brussel sprouts, burdock, cabbage, chard, herbs, kale, mustard, peas, sudangrass, sunflowers, organic carrots, herbs, flowers and spices.



LIVESTOCK PRODUCTION AND VALUE 2004 - 2003

ITEMS	YEAR	NUMBER OF		UNIT	VALUE	
		HEAD	LIVEWEIGHT		PER UNIT	TOTAL
CATTLE AND CALVES	2004	26,500	145,750	Cwt.	\$88.30	\$12,870,000
	2003	26,100	143,550	Cwt.	81.00	11,628,000
SHEEP AND LAMBS	2004	3,200	3,520	Cwt.	90.40	318,000
	2003	3,800	4,180	Cwt.	88.00	368,000
MISCELLANEOUS ¹	2004	-----	-----	----	-----	268,000
	2003	-----	-----	----	-----	140,000
TOTAL	2004					\$13,456,000
	2003					12,136,000

¹ Includes chickens, goats, hogs and quail.



LIVESTOCK PRODUCTS 2004 - 2003

ITEMS	YEAR	PRODUCTION	UNIT	VALUE	
				PER UNIT	TOTAL
MISCELLANEOUS	2004 ¹	-----	-----	-----	\$34,000
	2003 ²	-----	-----	-----	145,000
TOTAL	2004				\$34,000
	2003				145,000

¹ Includes wool.

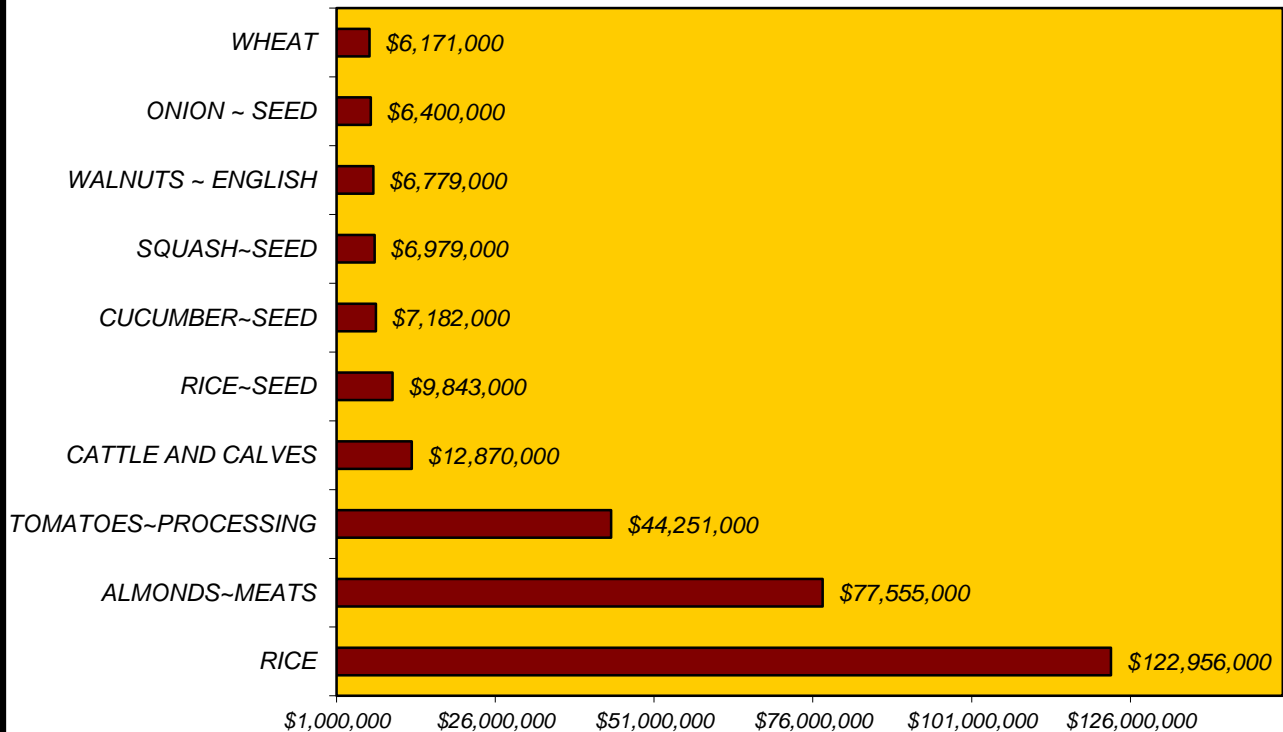
² Includes wool and market milk.



TEN LEADING FARM COMMODITIES 2004 - 2003

CROP	AMOUNT	<u>2004</u>	<u>2003</u>
RICE	\$122,956,000	1	1
ALMONDS ~ MEATS	77,555,000	2	2
TOMATOES ~ PROCESSING	44,251,000	3	3
CATTLE AND CALVES	12,870,000	4	4
RICE ~ SEED	9,843,000	5	5
CUCUMBER ~ SEED	7,182,000	6	7
SQUASH ~ SEED	6,979,000	7	9
WALNUTS ~ ENGLISH	6,779,000	8	6
ONION ~ SEED	6,400,000	9	10
WHEAT	6,171,000	10	8

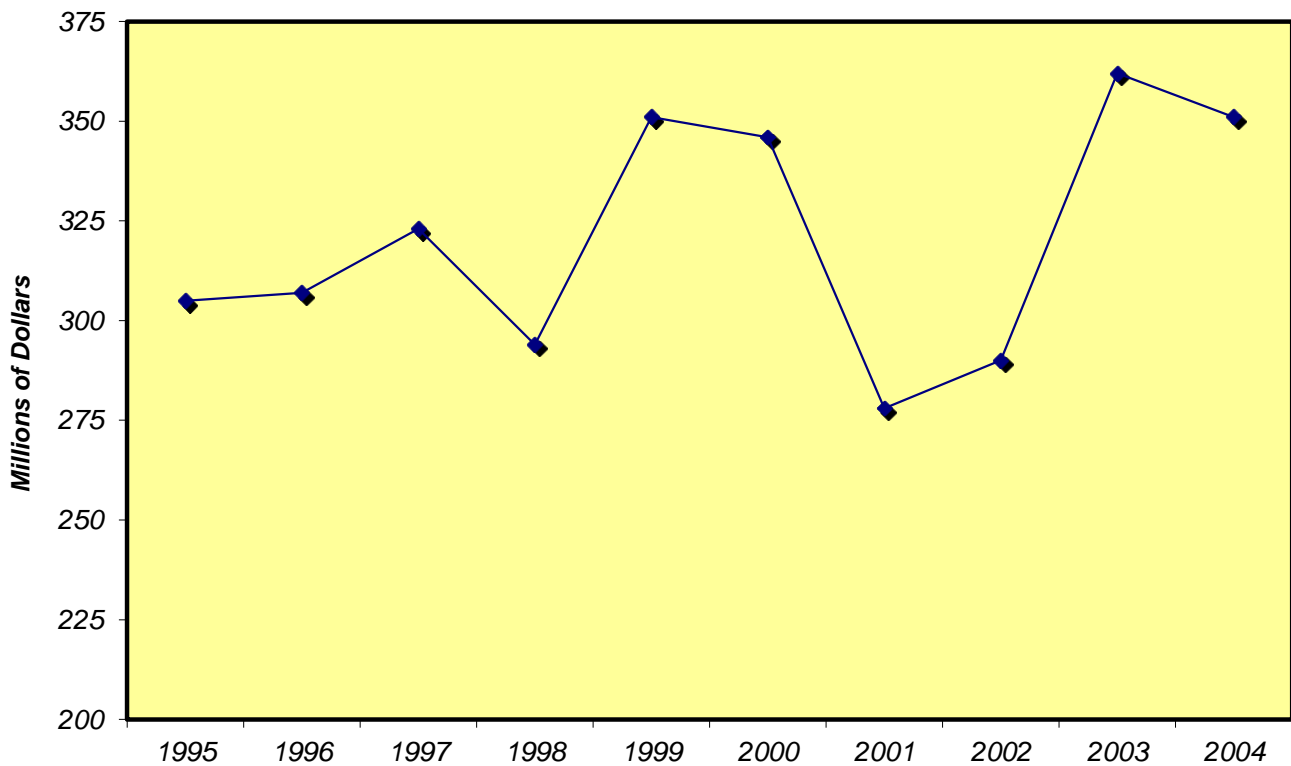
TEN LEADING FARM COMMODITIES



TEN YEAR COMPARISON 2004 - 1995

2004	GRAND TOTAL	\$351,604,000
2003	GRAND TOTAL	361,573,000
2002	GRAND TOTAL	290,264,000
2001	GRAND TOTAL	277,826,000
2000	GRAND TOTAL	345,906,000
1999	GRAND TOTAL	351,278,000
1998	GRAND TOTAL	293,633,000
1997	GRAND TOTAL	322,922,000
1996	GRAND TOTAL	306,908,000
1995	GRAND TOTAL	304,900,000

TEN YEAR COMPARISON





Colusa County Commodities and Their Destinations

Colusa County exports these vegetable and flower seeds overseas:

Asparagus
Basil
Bean
Broccoli
Cabbage
Calendula
Cantaloupe
Carrot
Cauliflower
Chicory

Coriander
Corn
Cucumber
Dill
Gourd
Kale
Lettuce
Melon
Mustard
Onion

Parsley
Peas
Pepper
Pumpkin
Radish
Squash
Sunflower
Tomato
Turnip
Watermelon

Food crops that are exported overseas include:



Almonds
Plums
Rice
Beans
Prunes
Wild Rice



Importing countries that purchase commodities produced in Colusa County:

Argentina
Australia
Austria
Bahrain
Belgium
Belize
Brazil
Canada
Canary Islands
Chile
China
Colombia
Cyprus
Denmark
Dominican Republic
Ecuador
El Salvador
Egypt
Finland
France
Germany
Ghana
Greece
Guam

Guatemala
Hong Kong
Iceland
India
Indonesia
Israel
Italy
Jamaica
Japan
Jordan
Kenya
Kuwait
Lebanon
Lithuania
Malaysia
Martinique
Mexico
Micronesia
Netherlands
New Caledonia
New Zealand
Nicaragua
Norway
Pakistan

Panama
Papua New Guinea
People's Republic of China
Peru
Philippines
Poland
Portugal
Republic of Korea
Russian Federation
Saipan
Saudi Arabia
Singapore
South Africa
Spain
Sweden
Switzerland
Taiwan
Tahiti
Thailand
Trinidad & Tobago
Turkey
United Arab Emirates
United Kingdom
Venezuela

