

COLUSA COUNTY
DEPARTMENT OF AGRICULTURE
JOSEPH J. DAMIANO
AGRICULTURAL COMMISSIONER/SEALER OF WEIGHTS AND MEASURES
100 SUNRISE BLVD., SUITE F
COLUSA, CA 95932
530-458-0580

TO: *Karen Ross, Secretary
California Department of Food and Agriculture
and the Honorable Board of Supervisors, Colusa County*

In accordance with the provisions of Section 2279 and 2272 of the California Food and Agricultural Code, I am pleased to submit the 2012 Colusa County Crop Report. This annual report presents statistical information on acreage, yield, and value of Colusa County's agricultural products.

Agriculture continues to be Colusa County's major producing industry. The 2012 gross production for agriculture was \$711,592,000. This was an increase of approximately 8% when compared to the 2011 value of \$657,735,000. The 2012 crop is the highest value on record for Colusa County.

Rice continues to be the number one crop in both acreage and gross return in Colusa County. The overall yield and price for rice remained stable in comparison to the previous year. Walnut and Almond orchards plantings have increased over the past years and significant acreage of these two crops are coming into production at a time when prices are increasing. The combination of these two crops alone account for an increase of over 55 million in gross receipts for the 2012 crop year in Colusa County.

I must emphasize that the crop report figures show gross values only, and do not reflect a net return to the producer.

I wish to express my sincere appreciation to the processors, producers, and other government agencies who contribute the information that makes this report possible. I also express appreciation to all of my staff, especially Mary Anne Azevedo, Assistant Agricultural Commissioner and Lee Ann Price, Administrative Secretary, who compiled this report.

Respectfully submitted,

*Joseph J. Damiano
Agricultural Commissioner*



COLUSA COUNTY DEPARTMENT OF AGRICULTURE ANNUAL CROP REPORT 2012

2012 COUNTY BOARD OF SUPERVISORS

Gary Evans 4, Chairperson

Kim Dolbow Vann, District 1
Thomas A. Indrieri, District 2

Mark D. Marshall, District 3
Denise J. Carter, District 5

OFFICE PERSONNEL

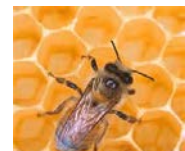
Joseph Damiano
Mary Anne Azevedo
R. Scott Kittle
Jack de Wit
Thomas Moss
Benjamin Reische
Kristen Buist
Curtis Gardner
Renee McCormick
Lee Ann Price
Dawn Brown
Samantha Doane

Agricultural Commissioner
Assistant Agricultural Commissioner
Agricultural Biologist and Standards Officer III
Agricultural Biologist and Standards Officer III
Agricultural Biologist and Standards Officer III
Agricultural Biologist and Standards Officer I
Agricultural Biologist and Standards Officer I
Agricultural Aide
Fiscal Administrative Officer
Administrative Secretary I
Account Clerk III
Office Assistant

APIARY PRODUCTION AND VALUE 2012 - 2011

	YEAR	PRODUCTION	UNIT	VALUE	
				PER UNIT	TOTAL
HONEY ¹	2012	32,000	Lb.	\$1.85	\$59,000
	2011	45,900	Lb.	1.50	69,000
PACKAGE BEES ²	2012	6,000	Lb.	14.66	88,000
	2011	6,000	Lb.	19.50	117,000
POLLINATION ³	2012	87,600	Colony	138.00	12,089,000
	2011	83,500	Colony	110.00	9,185,000
QUEENS	2012	33,700	Each	19.50	657,000
	2011	33,000	Each	18.00	594,000
TOTAL	2012				\$12,893,000
	2011				9,965,000

- ¹ Honey produced by 14,500 colonies in 2012 and 20,800 colonies in 2011, owned by resident beekeepers.
- ² Includes bulk bees and nuclei.
- ³ Pollination colonies include almond, prune, sunflower, vine seed and onion to pollinate crops grown in Colusa County.



VEGETABLE CROPS ACREAGE, PRODUCTION AND VALUE 2012 - 2011

CROPS	ACREAGE		PRODUCTION		VALUE		TOTAL
	YEAR	HARVESTED	PER ACRE	TOTAL	UNIT	PER UNIT	
TOMATOES-PROCESSING	2012	13,468	44.0	592,592	Ton	\$70.00	\$41,481,000
	2011	12,680	46.0	583,280	Ton	64.00	37,330,000
MISCELLANEOUS ¹	2012	190	-----	-----	-----	-----	14,402,000
	2011	190	-----	-----	-----	-----	17,284,000
TOTAL	2012	13,658					\$55,883,000
	2011	12,870					54,614,000

¹ Includes asparagus, beans, beets, bell pepper, bokchoy, broccoli, cauliflower, cucumbers, eggplant, garlic, kohlrabi, lettuce, melons, mushrooms, okra, onions, peas, peppers, pumpkins, radish, squash, sweet corn, swiss chard, tomatoes, turnips and watermelon.



FRUIT AND NUT CROPS ACREAGE, PRODUCTION AND VALUE 2012 - 2011

CROP	ACREAGE		PRODUCTION		VALUE		TOTAL
	YEAR	HARVESTED	PER ACRE	TOTAL	UNIT	PER UNIT	
ALMONDS - MEATS	2012	45,335	0.93	42,162	Ton	\$4,175.00	\$176,024,000
	2011	41,214	0.93	38,329	Ton	3,460.00	132,618,000
ALMONDS - HULLS	2012	-----	-----	59,501	Ton	100.00	5,950,000
	2011	-----	-----	47,911	Ton	91.00	4,360,000
GRAPES, WINE	2012	2,449	10.30	25,225	Ton	594.00	14,983,000
	2011	2,400	7.25	17,400	Ton	615.50	10,710,000
PRUNES	2012	913	2.05	1,872	Ton	1,400.00	2,620,000
	2011	1,167	1.98	2,311	Ton	1,400.00	3,235,000
BEARING WALNUTS - ENGLISH	2012	8,040	1.60	12,864	Ton	2,870.00	36,920,000
	2011	7,315	1.30	9,510	Ton	2,580.00	24,535,000
MISCELLANEOUS ¹	2012	2,257	-----	-----	-----	-----	13,522,000
	2011	2,142	-----	-----	-----	-----	15,687,000
TOTAL	2012	58,994					\$250,019,000
	2011	54,238					191,145,000

¹ Includes organic almonds, apples, apricots, Asian pears, black walnuts, cherries, figs, mandarins, melons, olives, nectarines, peaches, pears, pecans, persimmons, pistachios, pluots, plums, pomegranates, strawberries, organic walnuts & watermelon.



FIELD CROPS

ACREAGE, PRODUCTION AND VALUE 2012 - 2011



	YEAR	ACREAGE		PRODUCTION		VALUE	
		HARVESTED	PER ACRE	TOTAL	UNIT	PER UNIT	TOTAL
BEANS - DRY	2012	5,290	0.875	4,629	Ton	\$990.00	\$4,583,000
	2011	4,260	1.25	5,325	Ton	990.00	5,272,000
CORN - GRAIN	2012	5,660	4.88	27,621	Ton	331.00	9,143,000
	2011	4,560	7.70	35,112	Ton	217.00	7,619,000
HAY - ALFALFA	2012	11,770	5.60	65,912	Ton	235.00	15,489,000
	2011	10,860	6.50	70,590	Ton	208.00	14,683,000
HAY - GRAIN ¹	2012	2,092	3.40	7,113	Ton	148.00	1,053,000
	2011	2,119	3.00	6,357	Ton	120.00	763,000
PASTURE - IRRIGATED	2012	1,100	-----	-----	Acre	125.00	137,500
	2011	920	-----	-----	Acre	130.00	119,600
PASTURE - DRYLAND	2012	180,000	-----	-----	Acre	15.00	2,700,000
	2011	180,000	-----	-----	Acre	15.00	2,700,000
RICE ²	2012	149,860	4.35	651,891	Ton	376.00	245,111,000
	2011	149,460	4.40	657,624	Ton	370.00	243,321,000
SAFFLOWER	2012	1,610	0.80	1,288	Ton	552.00	711,000
	2011	1,060	0.92	975	Ton	516.00	503,000
WHEAT	2012	16,120	2.40	38,688	Ton	233.00	9,014,000
	2011	16,590	2.78	46,120	Ton	220.00	10,146,000
MISCELLANEOUS	2012 ⁴	-----	-----	-----	---	-----	9,292,000
	2011 ³	-----	-----	-----	---	-----	6,155,000
TOTAL	2012	373,502					\$297,233,500
	2011	369,829					291,281,600

¹ Includes wheat, barley, oat, rye grass, sudangrass and volunteer grain hay.

² Includes all Farm Service Agency payments to growers.

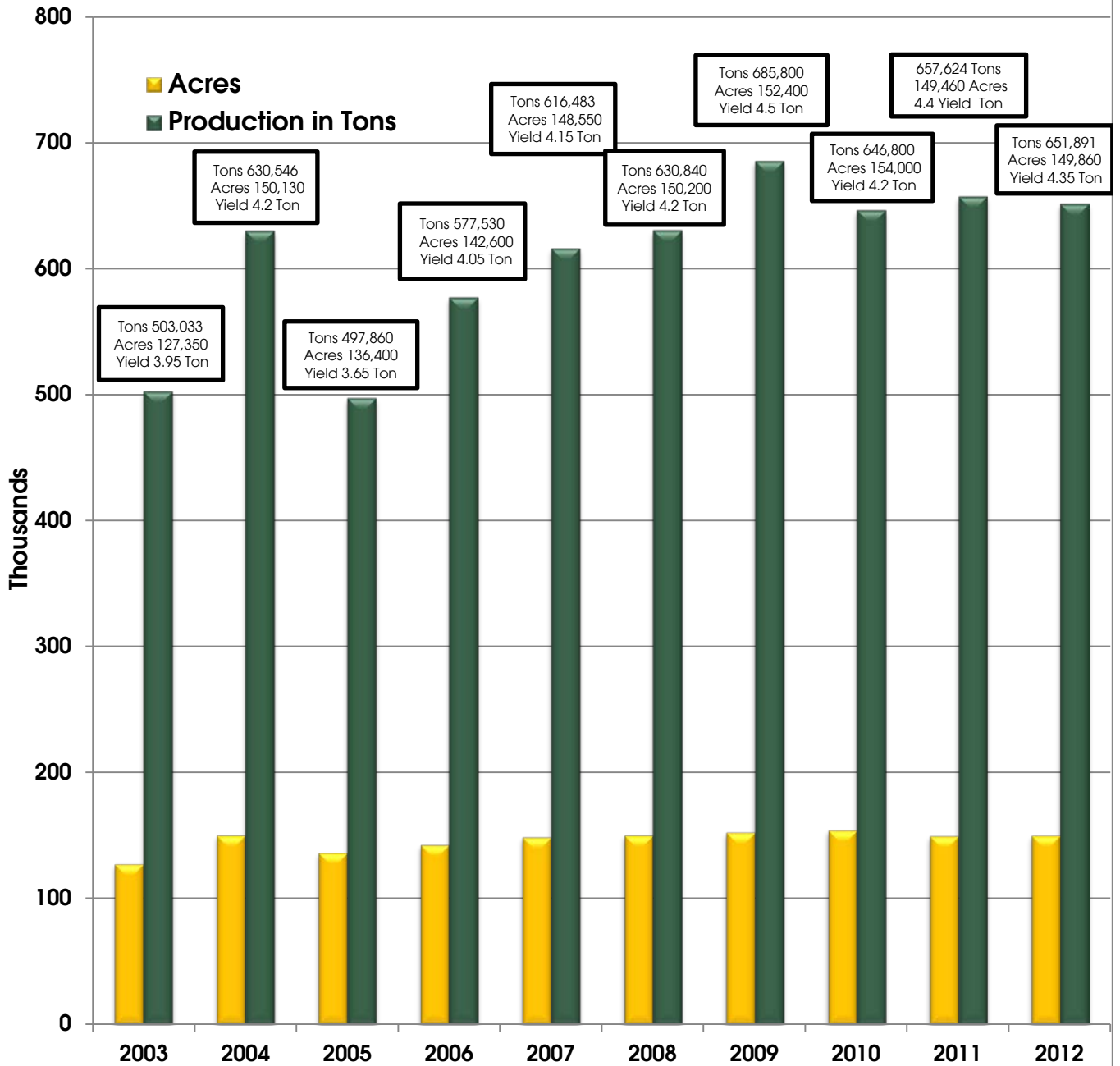
³ Includes alfalfa stubble, barley, beans, rice, wheat straw, cotton seed and lint, oats, organic beans, organic rice and triticale.

⁴ Includes alfalfa stubble, cotton, rice & wheat straw, organic beans, organic rice and sorghum grain.



RICE 2003-2012

Total Acres/Total Production



CERTIFIED SEED CROPS

ACREAGE, PRODUCTION AND VALUE 2012 - 2011

CROP	YEAR	ACREAGE		PRODUCTION		VALUE	
		HARVESTED	PER ACRE	TOTAL	UNIT	PER UNIT	TOTAL
BEANS	2012	542	2,220	1,203,240	Lb.	\$0.48	\$578,000
	2011	144	2,480	357,120	Lb.	0.48	171,000
RICE	2012 ¹	9,711	8,080	78,464,880		0.35	27,463,000
	2011	10,440	8,800	91,872,000	Lb.	0.37	33,993,000
SUNFLOWER	2012	6,560	1,140	7,478,400	Lb.	1.53	11,442,000
	2011	5,566	1,278	7,113,348	Lb.	1.20	8,536,000
WHEAT	2012	153	4,850	742,050	Lb.	0.12	89,000
	2011	303	5,600	1,696,800	Lb.	0.11	187,000
MISCELLANEOUS	2012 ²	602	-----	-----	-----	-----	1,496,000
	2011 ³	242	-----	-----	-----	-----	1,117,000
TOTAL	2012	17,568					\$41,068,000
	2011	16,695					44,004,000

¹ Includes all Farm Service Agency payments to growers.

² Asparagus and safflower.

³ Asparagus, cotton and safflower.



NON-CERTIFIED SEED CROPS

CROP	YEAR	ACREAGE		PRODUCTION		VALUE	
		HARVESTED	PER ACRE	TOTAL	UNIT	PER UNIT	TOTAL
CUCUMBER	2012	1,557	349	543,393	Lb.	\$15.80	\$8,586,000
	2011	3,280	356	1,167,680	Lb.	13.30	15,530,000
MELON	2012	261	462	120,582	Lb.	4.12	497,000
	2011	877	544	477,088	Lb.	3.99	1,904,000
ONION	2012	741	201	148,941	Lb.	52.15	7,767,000
	2011	1,242	189	234,738	Lb.	47.46	11,141,000
CARROT	2012	269	577	155,213	Lb.	4.00	621,000
	2011	366	658	240,828	Lb.	7.59	1,828,000
PUMPKIN	2012	2,217	351	778,167	Lb.	7.42	5,774,000
	2011	1,299	270	350,730	Lb.	9.10	3,192,000
SQUASH	2012	1,436	455	653,380	Lb.	5.90	3,855,000
	2011	2,693	486	1,308,798	Lb.	3.90	5,104,000
WATERMELON	2012	3,381	317	1,071,777	Lb.	8.35	8,949,000
	2011	5,199	245	1,273,755	Lb.	8.67	11,043,000
MISCELLANEOUS	2012 ⁴	1,876	-----	-----	-----	-----	2,575,000
	2011 ⁵	1,658	-----	-----	-----	-----	2,866,000
TOTAL	2012	11,738					\$38,624,000
	2011	16,614					52,608,000

⁴ Beans, beets, broccoli, cabbage, canola, cauliflower, chard, collards, flowers, gourds, herbs, kale, leek, mustard, oats, okra, parsley, peas, radish, sudangrass, spices, sunflowers, tomato, turnips.

⁵ Beets, cabbage, carrot, celery, corn, gourds, herbs, kale, leeks, mustard, radish, sunflower, tomato, turnip and zinnia.



LIVESTOCK PRODUCTION AND VALUE 2012 - 2011

ITEMS	YEAR	NUMBER OF HEAD	LIVE WEIGHT	UNIT	VALUE	
					PER UNIT	TOTAL
CATTLE AND CALVES	2012	19,500	107,250	Cwt.	\$140.00	\$15,015,000
	2011	18,400	101,200	Cwt.	130.00	13,156,000
SHEEP AND LAMBS	2012	2,300	2,530	Cwt.	150.00	380,000
	2011	2,200	2,420	Cwt.	150.00	363,000
MISCELLANEOUS ¹	2012	-----	-----	----	-----	456,000
	2011	-----	-----	----	-----	423,000
TOTAL	2012					\$15,851,000
	2011					13,942,000

¹ Includes chukars, goats, hogs and quail.



LIVESTOCK PRODUCTS 2012 - 2011

ITEMS	YEAR	PRODUCTION	UNIT	VALUE	
				PER UNIT	TOTAL
MISCELLANEOUS ¹	2012	-----	-----	-----	\$20,600
	2011	-----	-----	-----	18,400
TOTAL	2012				\$20,600
	2011				18,400

¹ Includes wool.

2012 - 2011 HARVEST TIMBER PRODUCTION & VALUE

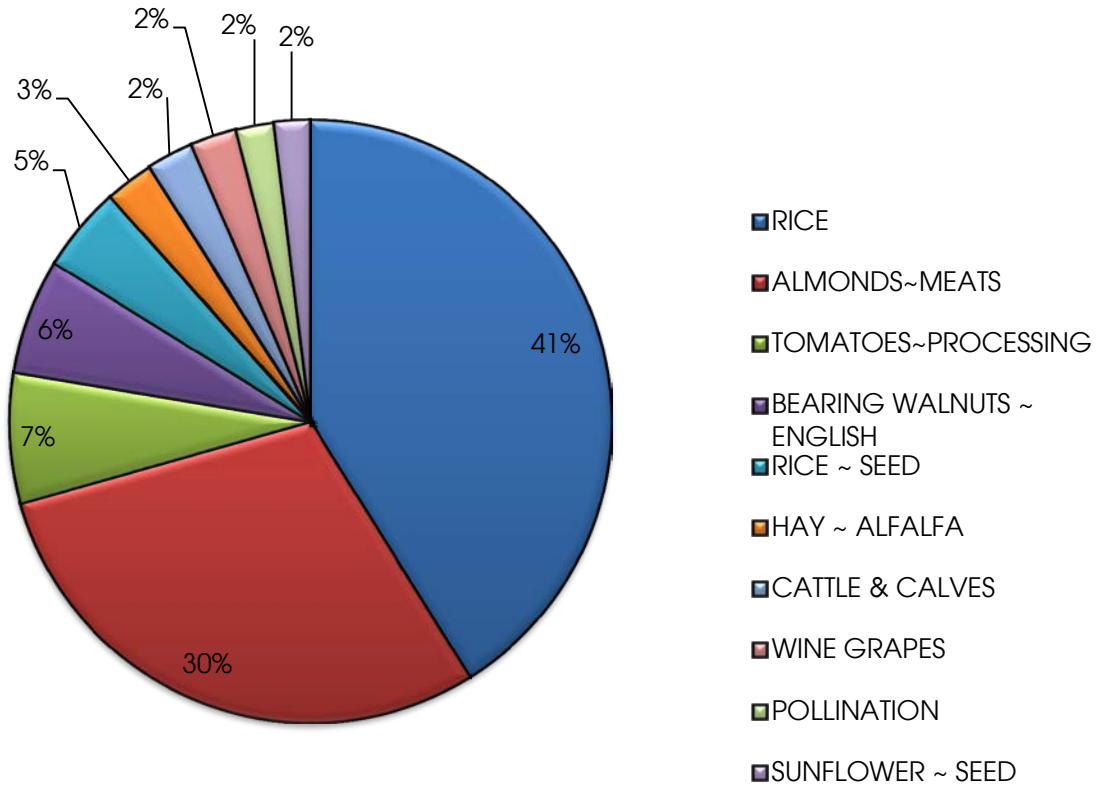
ITEMS	YEAR	PRODUCTION (NET MBF)*	TOTAL
HARVESTED TIMBER**	2012	0	\$0
	2011	1,743	157,000
TOTAL	2012		\$0
	2011		157,000

* Board feet is the quantity of timber cut and scaled.

** Timber production and value data are provided by State Board of Equalization, Timber Tax Division.

TEN LEADING FARM COMMODITIES 2012 - 2011

<u>CROP</u>	<u>AMOUNT</u>	<u>2012</u>	<u>2011</u>
RICE	\$245,111,000	1	1
ALMONDS ~ MEATS	\$176,024,000	2	2
TOMATOES ~ PROCESSING	\$41,481,000	3	3
BEARING WALNUTS ~ ENGLISH	\$36,920,000	4	5
RICE ~ SEED	\$27,463,000	5	4
HAY ~ ALFALFA	\$15,489,000	6	7
CATTLE & CALVES	\$15,015,000	7	8
WINE GRAPES	\$14,983,000	8	11
POLLINATION	\$12,089,000	9	13
SUNFLOWER ~ SEED	\$11,442,000	10	14



TEN YEAR COMPARISON 2012 - 2003

2012	GRAND TOTAL	711,592,000
2011	GRAND TOTAL	657,735,000
2010	GRAND TOTAL	640,802,000
2009	GRAND TOTAL	598,805,000
2008	GRAND TOTAL	662,644,000
2007	GRAND TOTAL	484,525,000
2006	GRAND TOTAL	422,729,000
2005	GRAND TOTAL	392,677,000
2004	GRAND TOTAL	351,604,000
2003	GRAND TOTAL	361,573,000

TEN YEAR COMPARISON

